



Brock's Performance Products • 4064 East Patterson Road • Dayton, OH 45430 • Phone: 937-912-0054 • Fax: 937-912-0062

Billet Adjustable Kickstand Installation Instructions **for the BMW S 1000 RR**

The Brock's Performance Billet Adjustable Kickstand is designed to replace the S 1000 RR OEM kickstand, with no modifications required, using the OEM hardware. This kickstand provides the adjustability needed with lowered suspension.

REMOVE OEM KICKSTAND

Securely support the bike on a swing arm stand.

Remove the retaining ring from the kickstand switch and slide the switch off. See figure 1.

Remove the spring from the kickstand; it is easiest to remove when the stand is in the up position.

Using a spring hook, pull the spring from the stud. See figure 2.

Remove the pivot bolt from the rear with a T50 Torx bit. See figure 3.

INSTALL BILLET ADJUSTABLE KICKSTAND

Remove the stopper cushion from the OEM kickstand and insert into the Billet Adjustable Kickstand. See figure 4.

Apply grease to the inside mounting faces of the Billet Adjustable Kickstand and to the pivot bolt.

Install the kickstand and torque the bolt to 35 Nm (25.8 ft-lb).

Replace the spring and kickstand switch.

ADJUST KICKSTAND LENGTH

Adjust the length of the kickstand to have adequate lean when parking the bike. Apply a removable thread locker to the (2) length adjusting bolts and torque to 7 Nm (62 in-lb).

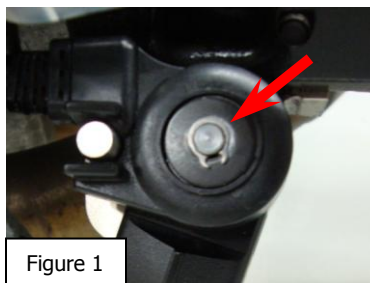


Figure 1

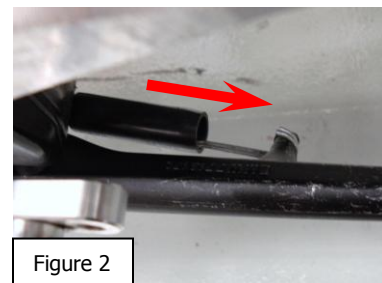


Figure 2

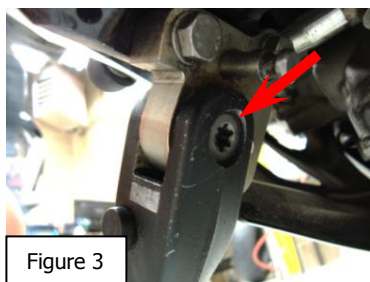


Figure 3



Figure 4



Brock's Performance Products are designed for Closed-Course Racetrack use ONLY!

For more information go to www.BrocksPerformance.com, **click:** Installation Instructions

Email: Advice@BrocksPerformance.com or call: 937-912-0054

Brock's Performance Products policies and warranty information: www.BrocksPerformance.com, **click:** Policies