

Brock's

PERFORMANCE

Brock's Performance Products • 4064 East Patterson Road • Dayton, OH 45430 • Phone: 937-912-0054 • Fax: 937-912-0062

Installation Instructions For **BMW S1000RR (2010-17) HD Clutch Spring Kit P/N: 270604**

This package contains:

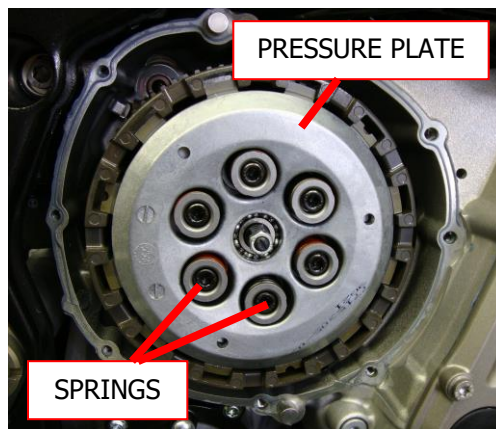
1. (6) Brock's Performance Heavy Duty Springs
2. (6) Brock's Performance Spring Tops
3. (6) Clutch Spring Shims 0.062" Thick
4. (6) Clutch Spring Shims 0.047" Thick
5. (6) Clutch Spring Shims 0.025" Thick
6. (6) Hard Anodized Aluminum Spacers 0.180" Thick
7. (6) Clutch Spring Bolts
8. (6) Clutch Spring Studs



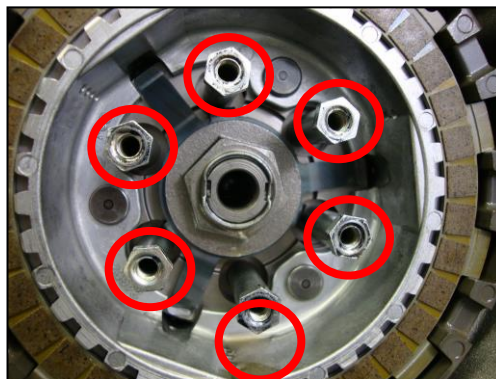
Special Note: We recommend the use of a factory service manual for all Brock's Performance product installations and/or maintenance.

A note before you begin: Assembly is in EXACT reverse order of disassembly, unless otherwise noted.

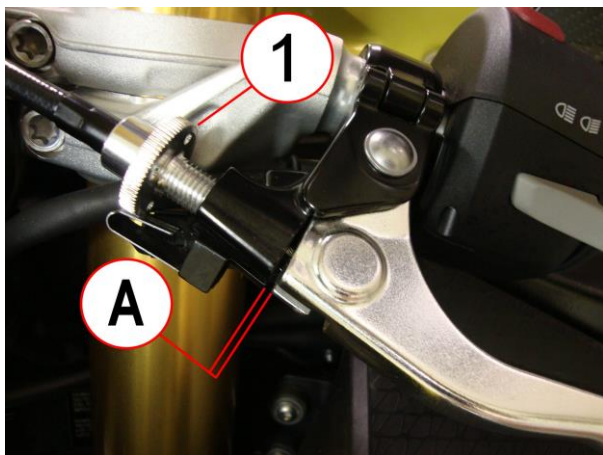
1. Remove clutch cover. The fairing need NOT be removed! It is helpful to remove the two (2) fairing mounting screws above and in front of the clutch cover. Gently hold the fairing away from the bike when removing the cover. Use caution-- the cover gasket is re-useable if undamaged.
2. Loosen and remove all (6) clutch springs/tops, the clutch springs, tops, and bolts will not be re-used. Remove the pressure plate.



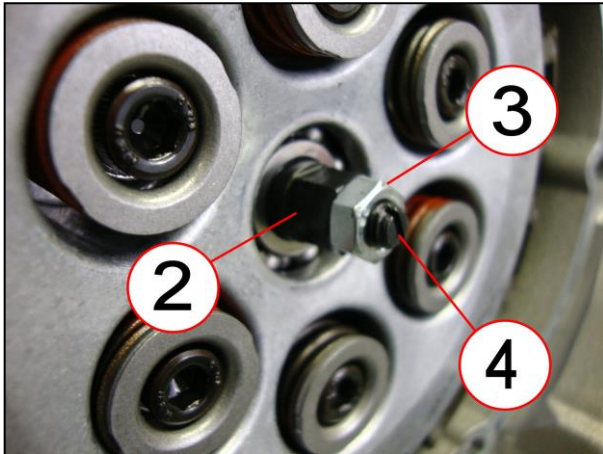
3. Remove the (6) clutch spring studs, these studs are not re-used.



4. Make sure the stud holes are clean and oil free, use a little brake parts cleaner if necessary. Replace the studs with the supplied studs and torque to 15 lb-ft (20 Nm).
5. Install the pressure plate.
6. Install the clutch springs with the supplied tops, shims and bolts. Use no shims for stock static pressure (50 lbs. x 6 springs = 300 lbs.) and add the 0.062" thick shims for an additional 7 lbs. per spring (Additional 42 lbs.), the 0.047" shims for an additional 5 lbs. per spring (Additional 30 lbs.), or the 0.025" shims for an additional 3 lbs. per spring (Additional 18 lbs.). It is recommended to install the shims equally on each spring. For maximum static pressure and heavier riders, use the hard anodized spring spacers (0.180" thick) with no other shims for a static pressure of 420 lbs. (70 lbs. x 6 springs). *Do not use the hard anodized 0.180" thick spacers with any other shims or coil bind will occur.* Use as much spring pressure as you are comfortable with to increase clutch life. Tighten the bolts in a cross pattern and torque the bolts to 6.5 lb-ft (9 Nm).
7. Adjust clutch free play.



Turn adjuster (1) in all the way.
 Hold push piece (2) and loosen the locknut (3).
 Hold the push piece (2) and turn in the adjuster (4) until it is just seated.
 Hold the push piece (2), turn out the adjuster (4) 1 turn.
 Hold the push piece (2), tighten the locknut (3) and torque to 6.5 lb-ft (9 Nm).
 Check that push piece (2) turns easily by hand.
 Turn the adjuster (1) to adjust gap (A) to 0.5 to 1.0 mm free play.



8. Replace the cover/gasket. Install and torque the bolts following the guidelines in the service manual.

LIMITED WARRANTY & LIABILITY DISCLAIMER

Brock Davidson Enterprises, Inc. unconditionally warrants that its parts be free from defects in Materials and Workmanship prior to installation. However, Brock Davidson Enterprises, Inc. does not make any warranties expressed or implied including without limitation, warrant to fitness, or Merchantability of any of our products for particular use or purpose due to extreme stress applications to which this product is subjected. All products are for racetrack use only. Any other use may violate the law. Not all parts are certified for highway use. Check your local and state laws. Brock Davidson Enterprises disclaims any all liability for consequential or incidental damages.

All Brock's Performance products are designed for closed-course racetrack use ONLY!

For more information on Brock's Performance Warranty and Terms and Conditions: www.BrocksPerformance.com > About Us > Terms and Conditions

For Questions and Comments: www.BrocksPerformance.com > Customer Service > Contact Us
 or call the Tech Line 937-912-0054