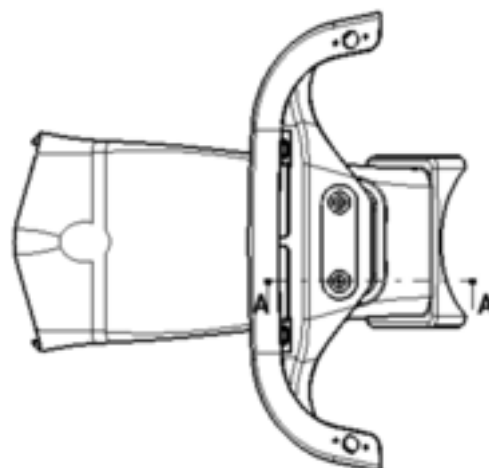
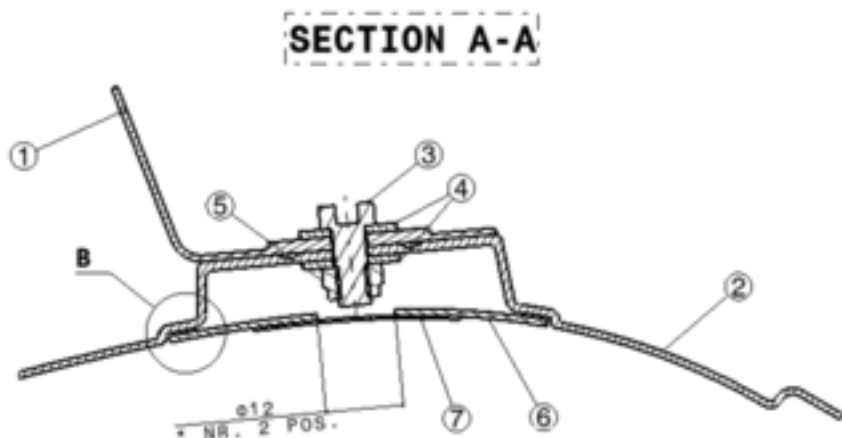
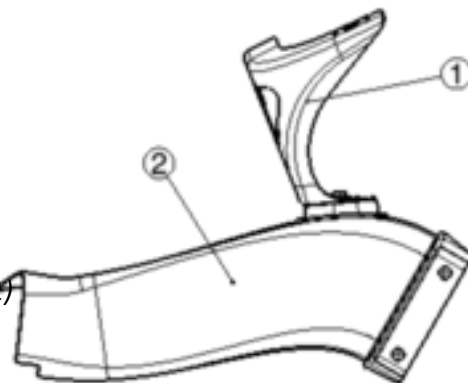


INSTRUCTIONS INTAKE KIT YAMAHA R1 2015 M.Y. ----->

PARTS DESCRIPTION:

1. DASHBOARD
2. AIRBOX DUCT
3. SCREW M5 X 12mm (UNI 9327 – DIN 7984) or equivalent
4. M5 PLANE WASHER LARGE SERIES (UNI 6593-ISO 7093-DIN 9021)
5. SELFLOCKING M5 NUT (DIN 985) or equivalent
6. DUCT COVER PLATE
7. ADHESIVE TAPE (cut to a disc diameter 40mm)



ASSEMBLY:

1. FASTEN THE AIRBOX DUCT (POS. 2) TO THE DASHBOARD (POS.1) USING PARTS NR.3-4-5

2. TIGHTENING TORQUE TO BE APPLIED TO THE BOLTS IS 4 Nm

The parts can be fastened however with equivalent bolted connection (different specification , quick release bolts, anchor nuts, etc.) but the tightening torque to be applied will be obviously different by the one specified as point 2 above.

3. BOND THE DUCT COVER PLATE (POS.6) TO THE AIRBOX DUCT (POS.2) WITH EPOXY PASTE ADHESIVE (**). REFER TO THE PASTE ADHESIVE MANUFACTURER SPECIFICATIONS FOR BONDING OPERATION AND CURING TIME AND TEMPERATURE. SEE BELOW THE DETAIL VIEW "B".



If the dismount of the dashboard is frequently needed it is advised to bond the duct cover plate with an easy removable adhesive such as silicon or just use adhesive tape to fix it to the duct.

4. TO ALLOW THE DASHBOARD DISMOUNTABILITY PLEASE MACHINE AT LEAST A 12mm DIAMETER HOLE (*) ON THE DUCT COVER PLATE . THE HOLE WILL PERMIT TO ENTER WITH THE SOCKET DRIVE FOR THE NUT.THE HOLE CAN BE CLOSED SUBSEQUENTLY WITH A DISC OF ADHESIVE TAPE (POS. 7) IN ORDER TO KEEP THE INNER DUCT SURFACE CLEAN AND CONTINUOUS TO AVOID FLOW LOSSES.

If it is necessary to machine a larger hole because of the use of a different way of fastening it is therefore possible but the adhesive tape geometry will differ accordingly.

5. THE ASSEMBLY IS READY TO BE MOUNTED TO THE BIKE FRAME AND FAIRINGS USING THE RELATIVE FIXING

