



Brock's Performance Products • 4064 East Patterson Road • Dayton, OH 45430 • Phone: 937-912-0054 • Fax: 937-912-0062

Suzuki Hayabusa GSX-R1300 (2008-09) Bodywork Cutting for Sidewinder Exhaust

When installing sidewinder exhausts it is necessary to cut the right side lower bodywork for the exhaust system to pass through. It is recommended to follow this procedure for a custom appearance with proper clearances to prevent heat damage or burning of the bodywork.

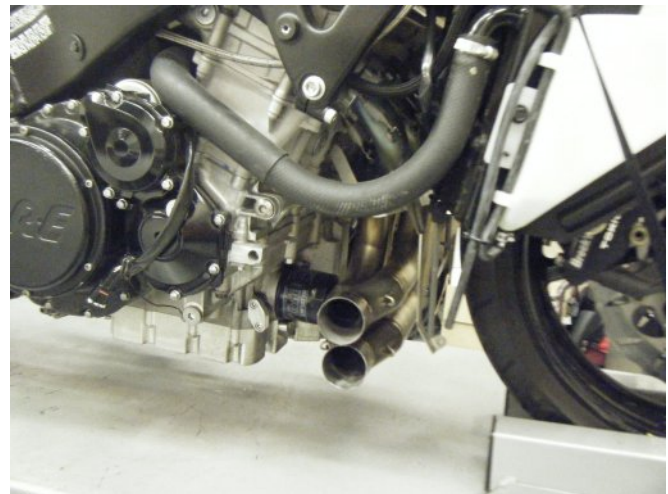
Brock's Performance does NOT warrant burned plastic. Make sure you have 1/4 inch minimum of clearance from plastic to pipe.



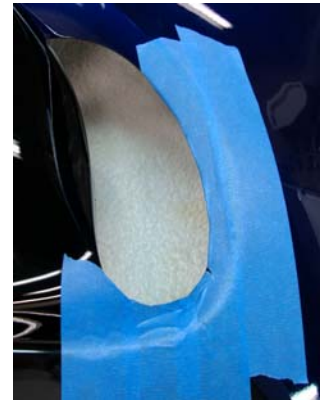
Suggested tools:

- Use a coping saw to cut the plastic.
- For plastic that is painted we recommend using blue painters tape to outline the area you are cutting so the paint does not chip when cutting with coping saw.
- We recommend the use of a Dremel type rotary tool to clean cut after use of coping saw
- Make small cuts and test fit plastic frequently to make sure there will not be huge gaps between the pipe and the bodywork. Remember 1/4 inch minimum gap.

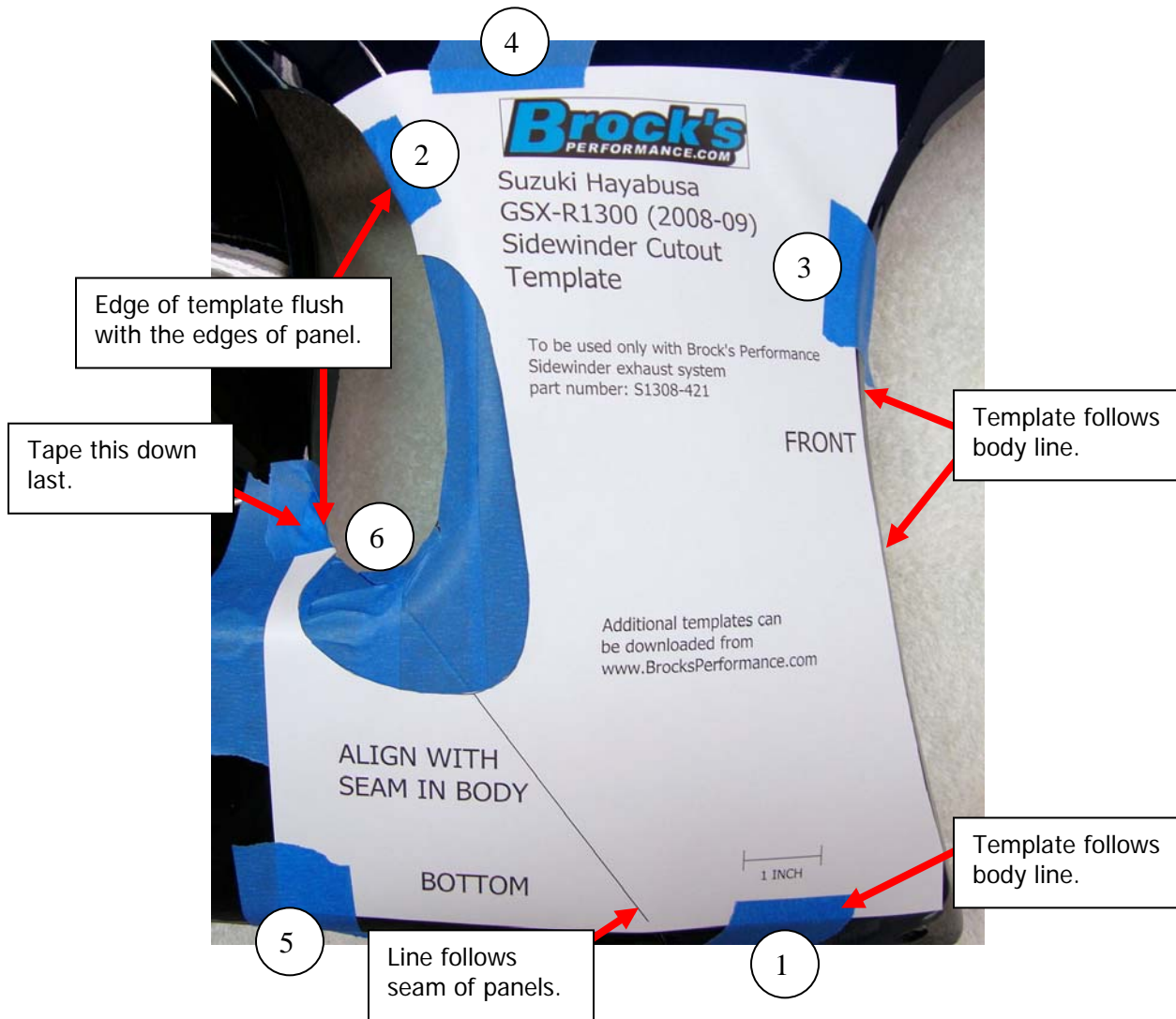
Completely install the sidewinder exhaust system following the instructions provided with bodywork removed. This will get the system aligned and fastened tightly. Remove the megaphone and collector pipe.



Apply tape to the outside of the area of the bodywork that will be cut. Taping a larger area than needed will help protect the finish during cutting.



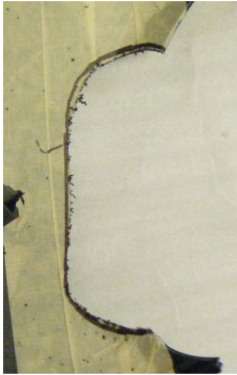
To print the template with Acrobat Reader, set page scaling to none and uncheck auto center and rotate. After printing, check the scale by measuring the 1 inch line on the template, if it is not 1 inch the template will not work correctly. Using scissors, Xacto knife, razor blade etc. Cut template along the lines labeled "CUT" following lines as close as possible. Place template onto the right side bodywork. Start at the bottom and front, keeping the template as flat as possible tape to the panel aligning as shown. It is easiest to keep it flat by taping the in the order shown.



Trace along edge of the template with a marking pen (Sharpie fine point works well). Remove the template.



Using a coping saw or tool of your choice, cut out area marked. When cutting, make sure the teeth of the saw are cutting toward the inside of the plastic, this will prevent the paint from being chipped along the cut. It is best to cut small amounts and test fit frequently until you get proper clearance (1/4 inch minimum) and a desired appearance. Carefully smooth the cut edges using a rotary tool with a drum sander, a fine file, or sandpaper.



Re-install the bodywork on both sides with it completely fastened. Install the collector and megaphone. Check for the proper clearances (1/4 inch minimum) and the desired appearance. It may take several fittings and some fine trimming which can be done with the bodywork installed and the collector and megaphone removed.



***Brock's Performance does NOT warrant burned plastic.
Make sure you have 1/4 inch minimum of clearance from
plastic to pipe.***

Brock's Performance Products are designed for Closed-Course Racetrack use ONLY!
For more information go to www.BrocksPerformance.com, **click:** Installation Instructions
If you have questions, you can email us at: Advice@brockspowerance.com or call us at: 937-912-0054
Brock's Performance Products policies and warranty information: www.BrocksPerformance.com, **click:** Policies



Suzuki Hayabusa GSX-R1300 (2008-09) Sidewinder Cutout Template

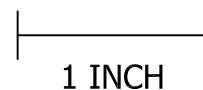
To be used only with Brock's Performance
Sidewinder exhaust system part numbers:
391587 - Polished
393537 - Black Ceramic

FRONT

Additional templates can
be downloaded from
www.BrocksPerformance.com

ALIGN WITH
SEAM IN BODY

Measure to verify template
is printed to scale



BOTTOM

CUT

CUT

CUT

CUT

CUT

CUT

CUT