

Brock's PERFORMANCE

Brock's Performance Products • 4064 East Patterson Road • Dayton, OH 45430 • Phone: 937-912-0054 • Fax: 937-912-0062

Installation Instructions for the CBR1000RR (08-09) CT Single Exhaust System

CHECK PACKAGE CONTENTS

1. One (1) Left Side Header (Cylinders 1 & 2)
2. One (1) Right Side Header (Cylinders 3 & 4)
3. One (1) Collector
4. One (1) Mid-pipe
5. One (1) CT Series Muffler
6. One (1) Package Containing Flanges, Springs, Spring Puller, Bracket and Hardware
7. One (1) Instruction Package



Brock's Performance CT Single

If any parts are missing, contact Brock's Performance Products.

*****PAIR BLOCK OFF MUST BE PERFORMED TO PREVENT PREMATURE EXHAUST FAILURE*****

PRE-ASSEMBLE HEADERS AND COLLECTOR TO ENSURE PROPER FIT BETWEEN ALL PARTS

Brock's Performance carefully inspects each system prior to shipping, we recommend that you test fit your system prior to installation. Apply WD-40 to the joints to ease assembly, adjustment, and/or disassembly.



REMOVE BODYWORK

Start with removing the upper inner covers (inside of air intake tubes), each has (3) plastic fasteners. Remove the air intake cover (below headlamps) with (3) plastic fasteners. Remove the lower cowl, (2) screws on each side and slide rearward to release clips. Remove middle cowls, (2) screws on each side and gently pull each outward to remove. Refer to a factory service manual for more detailed instructions.

REMOVE THE MUFFLER

Remove the EGCA cable (exhaust valve). Under the tail next to the passenger foot peg, remove the small cover with three (3) plastic fasteners. Turn the pulley clockwise and remove the cable. Replace the cover. Loosen the muffler clamp bolt; it only needs to be loosened not removed. While holding the muffler, remove the bolt securing the muffler to the passenger foot peg bracket. Release the ECGA cable from its clips. Remove the right side foot peg and remove the muffler. Remove the bolts securing the muffler heat shield from the foot peg. Replace the foot peg and torque the mounting bolts to 27 foot pounds.

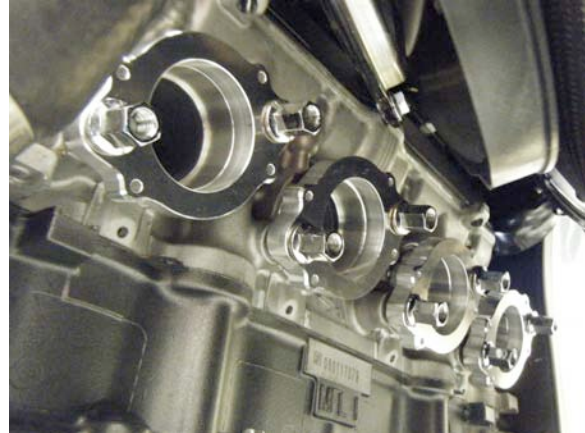
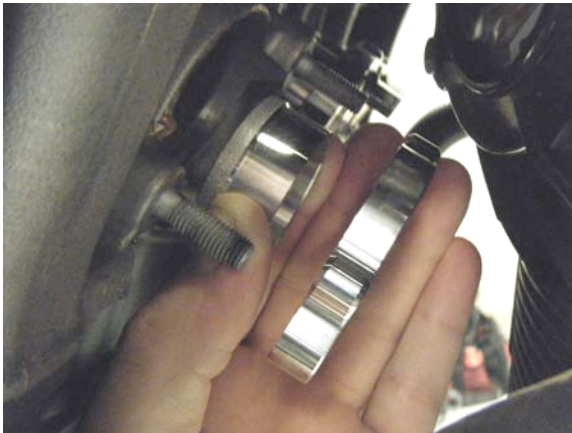


REMOVE THE HEAD PIPES

Remove the one (1) mounting bolt supporting the pipe at the rear of the engine. Remove the one (1) lower mounting bolt from the radiator bracket. You can gently push the radiator forward to make room for the removal of the headers. Remove all eight (8) of the nuts holding the four primaries to the head and remove the head pipes. *Be careful not to hit the flanges of the pipes on the radiator*, some times a piece of cardboard will help in this area for protection of the radiator. Check to make sure the exhaust gaskets are still in the head, do not remove, you will reuse these.

INSTALL FLANGES

Attach the flanges with the larger flared side against the gaskets in the cylinder head and aligned as shown. Make sure flanges are flat to the gaskets; do not tighten until the next step.



INSTALL HEAD PIPES

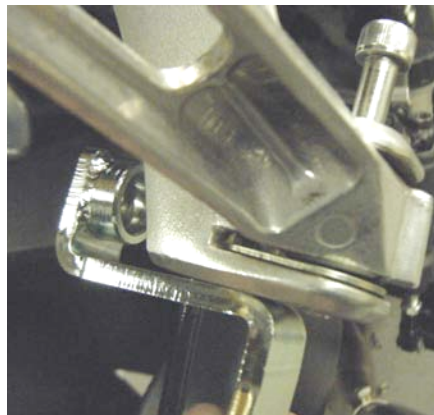
Insert cylinder 1 & 2 head pipe into the flanges, making sure not to hit the radiator. Attach the two (2) springs to the tabs on each of the header pipes. Repeat for cylinder 3 & 4 header pipes. Tighten the flanges to 10-15 ft-lbs to promote a proper seal. Make sure the radiator as well as other hoses have clearance from the head pipes.

INSTALL COLLECTOR

Install the collector to the head pipes aligning the colored dots. Install the two (2) springs. Once the springs are on, move the collector a little side to side and up and down to seat the collector and header pipes fully.

INSTALL BRACKET AND MUFFLER

Remove the one (1) pin securing the right passenger foot peg to the bracket and replace pin with supplied longer bolt. From the inside, place the round boss of the exhaust bracket into the inside of the foot peg bracket and thread the bolt through the bracket. Tighten the bolt only enough to secure the bracket and not bind the foot peg, install the supplied washers and nut.



Install the CT series muffler using the supplied bolt, washers, nut, and springs. Re-check all fasteners making sure everything is tightened properly.



CLEAN SYSTEM OF FINGER PRINTS

With any exhaust system you must clean all finger prints off before starting the motorcycle to insure there will not be finger prints "burned" into the pipe. Carefully use alcohol, brake clean, etc. to clean the system.

RE-ATTACH RADIATOR BRACKET

To re-attach the radiator to the lower bracket, insert the bolt removed earlier in the bottom radiator mount and tighten.

INSTALL BODYWORK AND CHECK CLEARANCE

Replace all bodywork and check clearance. *Bodywork must be at least 1/4 of an inch from any part of the exhaust system.* Brock's Performance does not warrant burned plastic.

ADDITIONAL

Review documents for air valve block off modifications.
Install the appropriate Power Commander map for your application.

*****CAUTION: PAIR BLOCK OFF MUST BE PERFORMED IN ORDER TO PREVENT PREMATURE EXHAUST FAILURE. PLEASE REFER TO THE PAIR BLOCK OFF INSTRUCTIONS THAT WERE INCLUDED OR FIND THEM AT BROCKSPERFORMANCE.COM. FAILURE TO PERFORM THIS MODIFICATION WILL VOID PRODUCT WARRANTY*****



Brocks Performance Products are designed for Closed-Course Race Track use **ONLY**.
Brocks Performance Products policies and warranty information: www.BrocksPerformance.com
For additional information: Check our [Information Forum](http://www.BrocksPerformance.com) at www.BrocksPerformance.com
E-mail advice@BrocksPerformance.com or call the Order Line 937-912-0054.